

ICE® Model 32D Hydraulic Vibratory Driver/ Extractor with Model 350G Power Unit



Patented design combines high eccentric moment (32 kg-m) and suspended weight with clamp under 4800 kg.

Lighter weight provides for increased reach or use with smaller cranes.

Reduced height for better access in low-overhead situations.

Up to 1000 kN line pull for extraction.

Patented Dual-pull™ suppressor provides maximum vibration isolation during driving and light extraction combined with high pull capability for tough extraction jobs.

261 kW CAT C9 Tier 3 (Stage IIIA) engine meets all EPA & EU emission regulations.

Optional 1345 kg bias weights increases pile penetration rates in difficult soils.

Environmentally friendly Chevron Clarity® non-toxic, biodegradable hydraulic oil.

Maximum efficiency and reliability are provided by our open-loop hydraulic system. Highest quality reliable piston pumps and motor.

Remote-control pendant for vibrator and clamp with emergency stop. Engine speed control for fuel efficiency.

Full range of clamps available for sheet piling, H-Beams, pipe & caissons in addition to timber & concrete piles.

Adaptable for underwater, low headroom or box leads operation.

Designed and manufactured in the USA by ICE®, world leader in cost-effective foundation equipment since 1974.

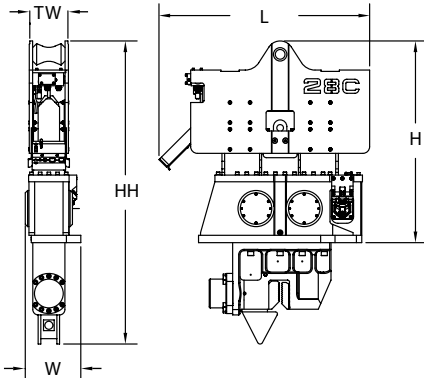


ICE® Model 32D

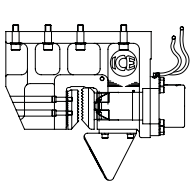
Hydraulic Vibratory Driver/ Extractor with Model 350G Power Unit



Dimensions

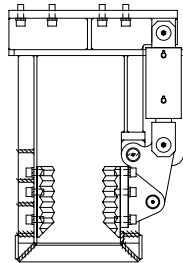


Clamps & Accessories



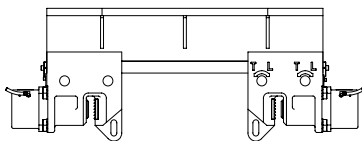
**Model 140C
Sheeting Clamp**

Clamping force
140 tons, 1245 kN
Weight
2,200 lbs, 1000 kg



**Model 40
Wood, Concrete
& Pipe Clamp**

Clamping force
40 tons, 355 kN
Weight
3,220 lbs, 1460 kg



**6.5' Caisson Beam with
Model 100BH Caisson Clamps**

Clamping force
220 tons, 1975 kN
Weight
4,610 lbs, 2090 kg

Other Model 32D Accessories

10' Clamp extension
90° Turning plate
Bias weights
Vibrator stand
Wireless remote

Model 32D Vibrator Specifications

Eccentric moment	32 kg-m
Maximum frequency	1700 vpm
Centrifugal force	1023 kN
Amplitude (free w/o clamp)	29 mm
Standard line pull for extracting	1000 kN
Maximum line pull for extracting	1000 kN
Weight (no clamp or hoses)	3395 kg
Non-vibrating weight	1190 kg
Height without clamp (H)	2075 mm
Length (L)	1940 mm
Width (W)	530 mm
Throat width (TW)	362 mm
Hydraulic hose length	46 m
Hydraulic hose weight	646 kg
Height with sheeting clamp* (HH)	3040 mm
Weight with sheeting clamp & 1/2 hoses*	4715 kg
Height with beam & caisson clamps* (HH)	2910 mm
Weight with beam & caisson clamps*	5810 kg

* See "Clamps and Accessories Manual" for in-depth description

Model 350G Power Unit Specifications

Engine	CAT C9
Power	261 kW
Operating speed	1850 rpm
Max. motors pressure	380 bar
Motors flow (no load)	367 lpm
Clamp pressure	310 bar
Clamp flow	24 lpm
Weight (w/ full fluid & 1/2 fuel)	5150 kg
Length	3300 mm
Width	1600 mm
Height	2200 mm
Hydraulic reservoir	1040 liters
Fuel capacity	445 liters

International Construction Equipment, Inc.
301 Warehouse Drive
Matthews, NC 28104 USA
888-ICE-USA1 / 704-821-8200
sales@iceusa.com / www.iceusa.com

Constant improvement and engineering progress make it necessary that ICE®, Inc reserve the right to make specification changes without notice. Please consult ICE® for the latest available information.

©International Construction Equipment, Inc. All rights reserved. January 2013.