



WWW.ICEUSA.COM
888-ICE-USA1

ICE® PILEMER MODEL IP2 (DKH-2U) HYDRAULIC IMPACT PILE HAMMER



Simple, proven, reliable single-acting design
Variable stroke ranges from 0.7' to 4' (200-1200mm)
High-energy transfer for maximum production
Variable stroke avoids damaging impact velocities to concrete (heavy ram, shorter stroke)
Equipped with box leads guides
Uses ICE® power units, drive caps and leads
Swinging, fixed and sliding leads available
Spotters available for precise pile manufacturing
Automatic or manual operations

WORKING SPECIFICATIONS

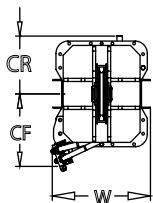
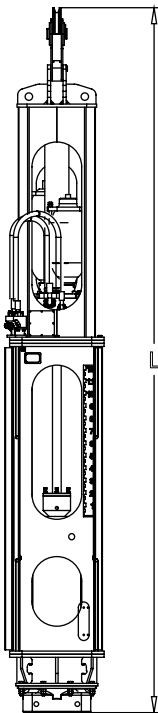
Ram weight	4,400 lbs	2 tonne
Maximum energy	17,350 ft-lbs	23 500 Nm
Minimum energy	2,900 ft-lbs	3 900 Nm
Stroke range	0.7 - 4 ft	200-1200 mm
Blows per minute	50-100	

WEIGHTS

Hammer with sheave & cap	10,000 lbs	4 490 kg
Hydraulic hose with oil (60 m)	1,700 lbs	770 kg
Pile insert (uses any ICE insert)	DCH-1	
Pile insert weight	780 lbs	354 kg
Operating weight with drive cap	12,480 lbs	5 614 kg

DIMENSIONS

Hammer length (L)	18-8 ft-in	5 670 mm
Length with drive cap above	19-3 in	5 800 mm
Overall width (W)	40 in	1 010 mm
Standard box leads	26 in	660 mm
Overall depth (CR + CF)	32 in	790 mm
Center line to rear (CR)	16 in	395 mm
Center line to front (CF)	16 in	395 mm



STANDARD POWER UNIT

Engine	CAT C6.6	
EPA/EU standard	Tier 3	Stage IIIA
Power	225 HP	168 kW
Flow (no load) for IP2	37 gpm	140 lpm
Max. pressure for IP2	2,700 psi	185 bar
Weight	9,310 lbs	4 225 kg
Length	110 in	2 800 mm
Height	77 in	1 960 mm
Width	58 in	1 475 mm



DESIGNED AND MANUFACTURED IN USA BY ICE®

WORLD LEADER IN COST-EFFECTIVE FOUNDATION EQUIPMENT SINCE 1974.

Constant improvement and engineering progress make it necessary that ICE®, Inc reserve the right to make specification changes without notice. Please consult ICE® for the latest available information. ©International Construction Equipment, Inc. All rights reserved. January 2015.